

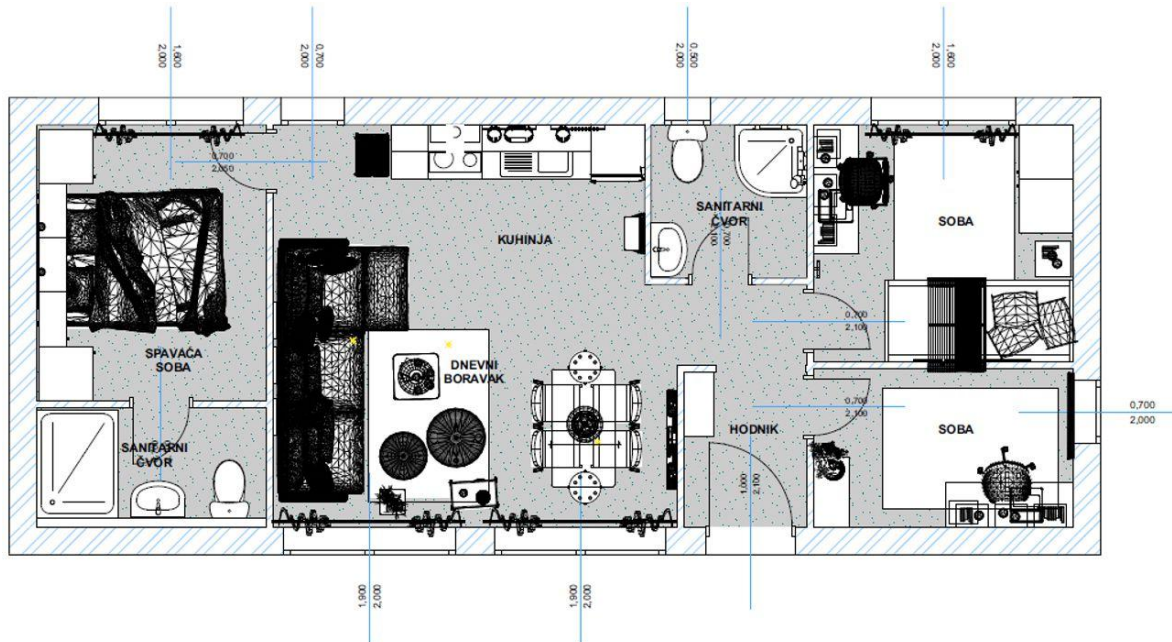
Marida 60



Front view



Backside view



Floor plan Marida 60

A1 GENERAL

Area (m2)	60
Sleeping capacity	5+2
Number of bedrooms	2
Number of bathrooms	2
Length (m)	12
Width (m)	5
Height (m)	3,91

B1 FLOOR

Floor metal construction	O
Insulating metal panels	O
Mineral wool insulation	O
Parapermeable foil	O
Wooden floor beams	O
Styrofoam	O
Waterproof floor covering binyl 8 mm	O

C1 EXTERNAL WALL SECTION

Knauf plate 12,50 mm painted white in finish	O
Fermacell plate 12,50 mm	O
Steam brake	O
Wooden load-bearing structure 10 cm statically and thermodynamically calculated	O
Mineral wool insulation 10 cm	O
Fermacell plate 12,50 mm	O
Facade wool 15 cm	O
Silicate facade layer in white color	O
Marble benches	O

C2 PARTITION WALL SECTION

Knauf plate 12,50 mm painted in white finish	O
Fermacell plate 12,50 mm	O
Wooden load-bearing structure 10 cm statically and thermodynamically calculated	O
Mineral wool insulation 10 cm	O
Fermacell plate 12,50 mm	O
Knauf plate 12,50 mm painted in white finish	O

C3 WINDOWS AND DOORS

PVC anthracite joinery	O
3 glasses	O
5 chambers	O
Mosquito nets	O
Electric blinds	O

C4 ROOF AND CEILING

Knauf plate 12,50 mm painted in white finish	O
Wooden roof grille of calculated durability for snow and wind loads	O
Mineral wool insulation	O
Vapor barrier	O
Steam barrier	O
External metal sheet white cover with 10 mm insulation	O
Gutters	O
Pipes	O
Leaves	O

D1 BATHROOM 1

Shower tray 90x90 cm	O
Shower cabin 90x90 cm	O
Shower mixer	O
Toilet bowl with soft close board system	O
Washbasin cabinet 50 cm	O
Sink mixer	O
Mirror 50 cm with shelf	O
El. boiler 50l external regulation	O
Washing machine	X
Ceramic tiles	O

D2 BATHROOM 2 (MASTER BEDROOM)

Shower tray 130x80 cm	O
Shower cabin 130x80 cm	O
Shower mixer	O
Toilet bowl with soft close board system	O
Washbasin cabinet 80 cm	O
Sink mixer	O
Mirror 80 cm with shelf and closet	O
Ceramic tiles	O

D3 SLEEPING ROOM 1 (MASTER BEDROOM)

Bridge wardrobe with night stands	O
Double bed 160x200 cm	O
Bed flooring	O
Mattress 160x200 cm	O
TV holder	X
TV 32 inch	X

D4 SLEEPING ROOM 2 (CHILDREN ROOM)

Double wardrobe	O
Sleeping beds 90x200 cm	O
Bed flooring	O
Mattresses 90x200 cm	O
TV holder	X
TV 32 inch	X
Night stand in white color 35x49 cm	O

D5 WORK ROOM

Cabinet 80x200 cm	O
Work desk 100x45 cm	O
Office chair	O

D6 KITCHEN

Kitchen lower freestanding and upper hanging elements	O
Electric oven	O
Kitchen hood	O
Dishwasher	O
Induction electric hob - 4 places	O
Freestanding refrigerator	O
Built in sink, one base with strainer, stainless steel	O
Sink faucet, effect stainless steel	O
Kitchen table 120/180 cm	O
Kitchen chairs	O

D7 LIVING ROOM

Corner sofa 230 cm x 151 cm	O
Coffee table	O
Chairs for coffee table	O
TV holder	X
TV 32 inch	X

E1 WATER AND GAS

External connector to water	O
Connection to central warm water	O
Connection to central wastewater	O
PVC water pipes	O
Central wastewater outlet	O
Electrical water heater	O

E2 ELECTRICAL INSTALLATIONS

Lighting fixtures in each rooms	O
Flush mounted installations, sockets and switches	O
External electric connection	O
Outdoor terrace socket	O
Anthracite exterior lamps on the front	O
TV sockets	O
LAN socket	O

E3 HEATING AND COOLING

Air conditioner Bosch inverter, 3,5 kW	O
Bathroom radiator flat 833 W	O
Dream Heat electric ceiling heating system with associated wi-fi control thermostats	O

F1 TERRACE / EXTERIOR EQUIPMENT

Terrace dimension 8,2x3 m	X
Metal chassis	X
Terrace tiles 2x60x60 cm	X
Sheet metal white cover 30 mm insulation	X
Metal vertical and horizontal supporting terrace pillars	X
Parapet decorative cladding with anthracite sheet metal around the terrace	X
Metal stairs with terrace tiles 2x60x60 cm on the sides finished with anthracite sheet metal	X

