

Leona 27 summer



Front view 1



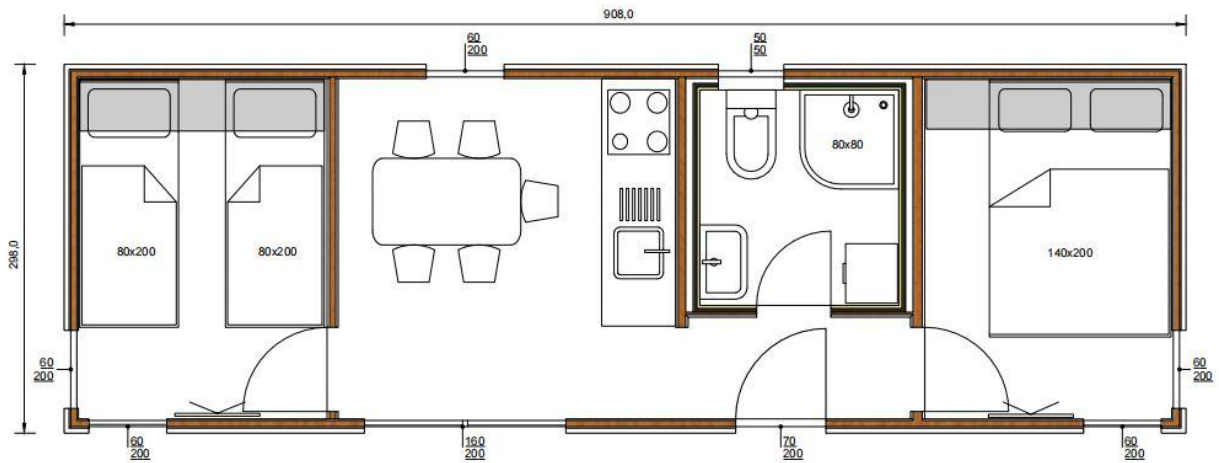
Front view 2



Backside view 1



Backside view 2



Floor plan Leona 27

A1 GENERAL

Area (m2)	27
Sleeping capacity of the mobile home	2+2
Number of bedrooms	2
Number of bathrooms	1
Length (m)	9
Width (m)	3
Height (m)	3,35

B1 CHASSIS

Welded metal chassis	0
Towing wheels	0
Axle	0
Corrosion protection	0

B2 FLOOR

Protection against penetration of rodents and insects	0
Floor insulation panel 40 mm	0
Protective flooring base	0
Waterproof floor covering binyl 8 mm	0

C1 WALL SECTION

Wooden load-bearing structure 50 mm statically and thermodynamically calculated	0
Two Fermacell plates 12,50 mm	0
Mineral wool insulation 50 mm	0
Steam barrier	0
Parapermeable foil	0

C2 EXTERIOR WALLS

Facade insulation panels in anthracite color	0
Decorative wooden slats	0
Corners: colors of cladding	0

C3 INTERIOR WALLS

White iveral plates	0
---------------------	---

C4 WINDOWS AND DOORS

PVC anthracite joinery	0
2 glasses	0
5 chambers	0
Fixed bathroom mosquito net	0
Plis mosquito nets	0

C5 ROOF AND CEILING

Ceiling iveral white plates	0
Wooden roof grille of calculated durability for snow and wind loads	0
Mineral wool insulation	0
Vapor barrier	0
Steam barrier	0
External metal sheet anthracite cover	0
Roof gutters and pipes for storm water drainage in anthracite color	0

D1 BATHROOM

Shower tray square white 80x80 cm	0
Shower cabin 80x80 cm	0
Shower mixer	0
Toilet bowl with soft close board system	0
Washbasin cabinet	0
Sink mixer	0
Mirror with shelf	0
Electric boiler 50 l external regulation	0
Bathroom flat radiator 833 W, 140x40 cm	0
Preparation for washing machine	0

D2 MASTER BEDROOM

Bridge wardrobe, 200x40 cm , 140x60 cm	0
Double bed 140x200 cm	0
Bed flooring	0
Mattress 140x200 cm	0
TV holder	0
TV 32 inch	0
Cornice	0
Curtain	0

D3 CHILDREN ROOM

Bunk bed 90x200 cm with wardrobe 60x42x181 cm	0
Two beds 80x200 cm with wardrobe 180x60 cm	0
Bed flooring	0
Mattresses 80x200 cm or mattresses for bunk bed 90x200 cm	0
TV holder	0
TV 32 inch	0
Cornice	0
Curtain	0

D4 KITCHEN

Kitchen lower freestanding and upper hanging elements 180 cm	0
Electric oven 59,4x56x58,9 cm	0
Kitchen hood 60x51x13 cm	0
Portable cooker 2 zones	0
Freestanding refrigerator 43 l , 47x45x49 cm	0
Built in sink, one base with strainer, stainless steel 70x50 cm	0
Sink faucet, effect stainless steel	0
Kitchen table , 70x130x105 cm	0
Kitchen chairs , 63-74 cm	0

E1 WATER AND GAS

External connector to water	0
Connection to central warm water	0
Connection to central wastewater	0
PVC water pipes	0
Central waste water outlet	0
Electrical water heater 50l	0

E2 ELECTRICAL INSTALLATIONS

Lighting fixtures in each rooms	0
Flush mounted installations, sockets and switches	0
External electric connection 63A, 250V, 2P+E	0
Anthracite exterior lamps on the front	0
TV sockets	0
LAN socket	0

E3 HEATING AND COOLING

Air conditioner Bosch inverter, 2,6 kW	0
Bathroom radiator flat 833 W	0
Heat Force ceiling electric heaters 450 W	0