

# Leona 27 winter



*Front view 1*



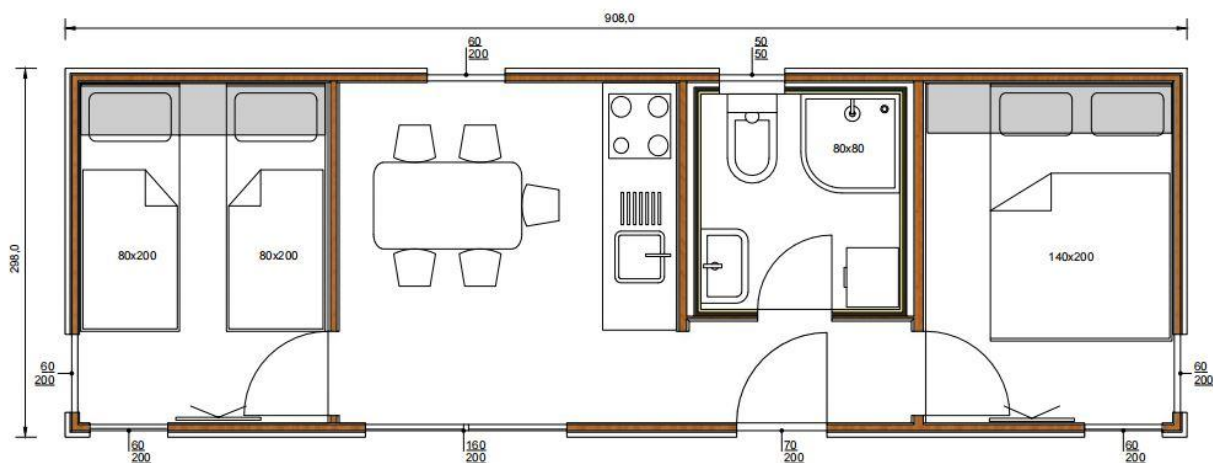
*Front view 2*



*Backside view 1*



*Backside view 2*



Floor plan Leona 27

## A1 GENERAL

Area (m <sup>2</sup> )	29,44
Sleeping capacity of the mobile home	2+2
Number of bedrooms	2
Number of bathrooms	1
Length (m)	9,2
Width (m)	3,2
Height (m)	3,35

## B1 CHASSIS

Welded metal chassis	0
Towing wheels	0
Axle	0
Corrosion protection	0

## B2 FLOOR

Protection against penetration of rodents and insects	0
Floor insulation panel 40 mm with additional floor insulation	0
Protective flooring base	0
Waterproof floor covering binyl 8 mm	0

## C1 WALL SECTION

Wooden load-bearing structure 50 mm statically and thermodynamically calculated	0
Two Fermacell plates 12,50 mm	0
Mineral wool insulation 50 mm	0
Steam barrier	0
Parapermeable foil	0

## C2 EXTERIOR WALLS

Facade insulation panels 100 mm	0
Facade insulation panels in anthracite color	0
Decorative wooden slats	0
Corners: colors of cladding	0

## C3 INTERIOR WALLS

White iveral plates	0
---------------------	---

## C4 WINDOWS AND DOORS

PVC anthracite joinery	0
2 glasses	0
5 chambers	0
Fixed bathroom mosquito net	0
Plis mosquito nets	0

## C5 ROOF AND CEILING

Ceiling iveral white plates	0
Wooden roof grille of calculated durability for snow and wind loads	0
Mineral wool insulation	0
Vapor barrier	0
Steam barrier	0
External metal sheet anthracite cover	0
Roof gutters and pipes for storm water drainage in anthracite color	0

## D1 BATHROOM

Shower tray square white 80x80 cm	0
Shower cabin 80x80 cm	0
Shower mixer	0
Toilet bowl with soft close board system	0
Washbasin cabinet	0
Sink mixer	0
Mirror with shelf	0
Electric boiler 50 l external regulation	0
Bathroom flat radiator 833 W, 140x40 cm	0
Preparation for washing machine	0

## D2 MASTER BEDROOM

Bridge wardrobe, 200x40 cm , 140x60 cm	0
Double bed 140x200 cm	0
Bed flooring	0
Mattress 140x200 cm	0
TV holder	0
TV 32 inch	0
Cornice	0
Curtain	0

### D3 CHILDREN ROOM

Bunk bed 90x200 cm with wardrobe 60x42x181 cm	O
Two beds 80x200 cm with wardrobe 180x60 cm	O
Bed flooring	O
Mattresses 80x200 cm or mattresses for bunk bed 90x200 cm	O
TV holder	O
TV 32 inch	O
Cornice	O
Curtain	O

### D4 KITCHEN

Kitchen lower freestanding and upper hanging elements 180 cm	O
Electric oven 59,4x56x58,9 cm	O
Kitchen hood 60x51x13 cm	O
Portable cooker 2 zones	O
Freestanding refrigerator 43 l , 47x45x49 cm	O
Built in sink, one base with strainer, stainless steel 70x50 cm	O
Sink faucet, effect stainless steel	O
Kitchen table , 70x130x105 cm	O
Kitchen chairs , 63-74 cm	O

### E1 WATER AND GAS

External connector to water	O
Connection to central warm water	O
Connection to central wastewater	O
PVC water pipes	O
Central waste water outlet	O
Electrical water heater 50l	O

## E2 ELECTRICAL INSTALLATIONS

Lighting fixtures in each rooms	0
Flush mounted installations, sockets and switches	0
External electric connection 63A, 250V, 2P+E	0
Anthracite exterior lamps on the front	0
TV sockets	0
LAN socket	0

## E3 HEATING AND COOLING

Air conditioner Bosch inverter, 2,6 kW	0
Bathroom radiator flat 833 W	0
Heat Force ceiling electric heaters 450 W	0